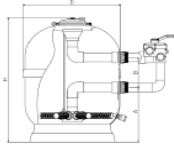


## Technical Data & Spare Parts OEM-P Sand Filters

### OEM-P Laminated Sand Filters

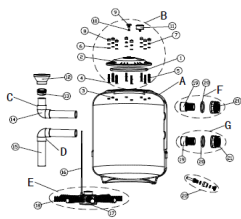
#### Technical Datas



| Technical Data<br>OEM-P Laminated<br>Sand Filter                   | side mounted valve          |   |  |   |
|--|-----------------------------|---|--|---|
|  | 77364                       | 77365   | 77366  | 77367   |
| Ø Filter D mm  | 500                         | 600   | 750  | 900   |
| H mm   | 736                         | 796   | 906  | 1021  |
| A mm   | 300                         | 323   | 320  | 390   |
| B mm   | 125                         | 125   | 230  | 270   |
| Connections  | 1.5"                        | 1.5"  | 2"   | 2"  |
| Flow rate m <sup>3</sup> /h at 50 m <sup>3</sup> /h/m <sup>2</sup> | 9.5                         | 15  | 22   | 32  |
| Pool (volume) m <sup>3</sup> (8 hrs)                               | 76                          | 120   | 176  | 256   |
| Sand kg  | 95                          | 125   | 290  | 400   |
| granular size  | 25 kg 0,4-0,8/70 kg 0,7-1,2 | 25 kg 0,4-0,8/75 kgs 0,7-1,2/<br>25 kgs 1,0-2,0 | 50 kg 0,4-0,8/115 kg 0,7-1,2<br>75 kg 1,0-2,0/50kg 2,0-4,0 | 75 kgs 0,4-0,8/125 kg 0,7-1,2<br>10 kg 1,0-2,0/100 kg 2,0-4,0 |
| Max. working pressure kg/cm <sup>2</sup>                           | 2,5                         | 2,5   | 2,5  | 2,5   |
| Net weight kg  | 15.20                       | 18.42   | 27.40  | 35.87   |
| General weight kg  | 17.80                       | 22.52   | 33.80  | 43.87   |
| Packaging volume m <sup>3</sup>                                    | 0.20                        | 0.35  | 0.61   | 0.94  |

### OEM-P Laminated Sand Filters

#### Spare Parts

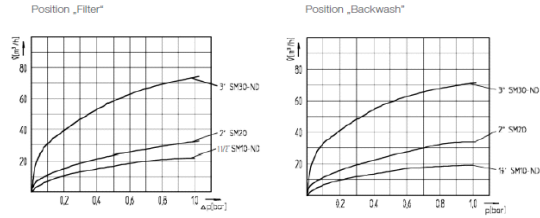


| Spare Parts<br>item | code          | description                        | pcs/m | remark             |
|---------------------|---------------|------------------------------------|-------|--------------------|
| 1                   | 3010101-0025  | O-ring 230x10 EPDM 65              | 1     |                    |
| 2                   | 3010101-0024  | White filter lid                   | 1     |                    |
| 3                   | 04010200-0027 | Nuts stainless steel M8 DIN 934 A2 | 8     |                    |
| 4                   | 03010101-0021 | O-ring 7x2                         | 8     |                    |
| 5                   | 03010101-0005 | racord M8x57 special two threads   | 8     |                    |
| 6                   | 03010101-0017 | arandela D8 DIN 125 A4             | 8     |                    |
| 7                   | 03010101-0006 | Nuts stainless steel M8 DIN 934 A4 | 8     |                    |
| 8                   | 03010101-0004 | White cover for M8 nuts            | 8     |                    |
| 9                   | 03010101-0003 | Flange bolt 1/4"                   | 1     |                    |
| 10                  | 03010101-0022 | Rubber gasket 1/4"                 | 1     |                    |
| 11                  | 03010101-0026 | Tapon plastico M8 blanco           | 1     |                    |
|                     | 03010101-0013 | Diffuser D50                       | 1     | D500/650           |
| 12                  | 3010103-0013  | Diffuser D63                       | 1     | D800/950/1050/1200 |
|                     | 03010101-0041 | Diffuser bolt D50                  | 1     | D500/650           |
| 13                  | 03010101-0042 | Diffuser bolt D63                  | 1     | D800/950/1050/1200 |
|                     | 03010101-0014 | Elbow D50                          | 2     | D500/650           |
| 14                  | 03010101-0014 | Elbow D63                          | 2     | D800/950/1050/1200 |
|                     | Pipe 50       | PVC pipe D50                       | 0,659 | D500               |
|                     |               |                                    | 0,82  | D650               |
|                     |               |                                    | 1     | D800               |
|                     |               |                                    | 1,2   | D950               |
|                     |               |                                    | 1,4   | D1050              |
| 15                  | Pipe 63       | PVC pipe D63                       | 1,55  | D1200              |
| 16                  | 03010101-0011 | pipe tube L620x6                   | 1     | D800/950/1050/1200 |
|                     | 6433          | Collector 8 holes                  | 1     | D500/650           |
| 17                  | 6434          | Collector 12 holes                 | 1     | D800/900/1050/1200 |
|                     | 6436          | L170 arm                           | 8     | D500               |
|                     | 6435          | L225 arm                           | 8     | D650/1050          |
|                     | 6435          | L225 arm                           | 12    | D800               |
|                     | 03010104-0003 | L310 arm                           | 12    | D950/1200          |
|                     | 6438          | Mix collector 125 mm 1"            | 12    | D1050/1200         |
| 18                  | 6439          | Collector union 1"                 | 12    | D1050/1200         |

**Praher Valve SM 1 1/2", 2"**  
**Technical Data**

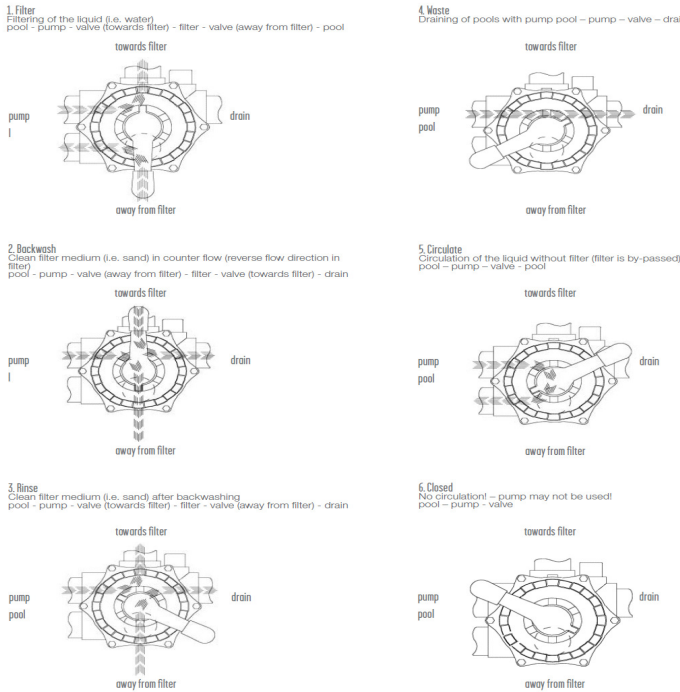


**Flowrate - Pressure Loss Diagram V6 SM 1/2", 2"**



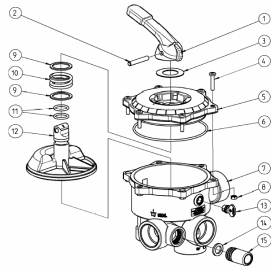
| Material           | Pressure/20"       | Dimension    | recommended Flowrate "Filter" | Body Conn.   | Colour            |
|--------------------|--------------------|--------------|-------------------------------|--|-------------------|
| ABS<br>TPE/EPDM    | 3,5 bar<br>3,5 bar | 1 1/2"<br>2" | 17 m3/h<br>27 m3/h            | BSP/NPT<br>female thread<br>DIN mm/ASTM<br>imperial<br>solv. conn. | white or<br>black |
| ASA-GF<br>TPE/EPDM | 6,0 bar<br>6,0 bar | 1 1/2"<br>2" | 17 m3/h<br>27 m3/h            | BSP/NPT/<br>JIS<br>female thread                                   |                   |

**Function- and installation diagram**



## Praher Valve SM 1 1/2"

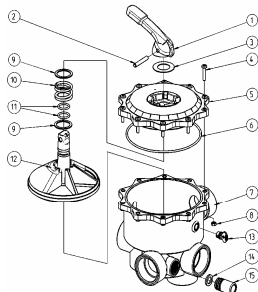
### Spare Parts



| Spare Parts            |        |                               |          |
|------------------------|--------|-------------------------------|----------|
| Praher Valve SM 1 1/2" |        |                               |          |
| Item                   | code   | description                   | unit pcs |
| 1                      | 100011 | handle                        | 2,36     |
| 2                      | 50084  | Bolt                          | 1,66     |
| 3                      | 100175 | Pom Washer                    | 0,57     |
| 4                      | 80007  | Screw                         | 1,67     |
| 5                      | 101649 | Lid lasered black             | 8,22     |
| 5                      | 101648 | Lid lasered white             | 8,22     |
| 8                      | 80008  | M6                            | 0,5      |
| 14                     | 50044  | Sealing set                   | 0,58     |
| 15                     | 100172 | sight glass                   | 1,85     |
|                        | 130772 | Valve top complete SM10 white | 33,35    |
|                        | 130994 | Valve top complete SM10 black | 33,35    |
|                        | 141924 | Sealing set                   | 19,22    |

## Praher Valve SM 2"

### Spare Parts



| Spare Parts        |         |                                    |          |
|--------------------|---------|------------------------------------|----------|
| Praher Valve SM 2" |         |                                    |          |
| Item               | code    | description                        | unit pcs |
| 1                  | 100011  | handle                             | 2,36     |
| 2                  | 50084   | Bolt                               | 1,66     |
| 3                  | 100175  | Pom Washer                         | 0,57     |
| 4                  | 80007   | Screw                              | 1,67     |
| 5                  | 101852b | Lid lasered black                  |          |
| 5                  | 101975b | Lid lasered white                  |          |
| 8                  | 80008   | M6                                 | 0,5      |
| 12                 | 101854  | Valve plate                        | 14,26    |
| 14                 | 50044   | sealing 25x16x3                    | 0,58     |
| 15                 | 100172  | sight glass                        | 1,85     |
|                    | 131136  | Valve top complete SM20+TM22 white | 52,80    |
|                    | 131145  | Valve top complete SM20+TM22 black | 52,80    |
|                    | 142068  | Sealing set                        | 29,00    |

**AQUASTAR comfort 3000, 4000, 6500**  
**3000 > digital time controlled**  
**4000 > time and pressure controlled**  
**6500 > digital time and pressure controlled, pump clock**  
**Technical Data**

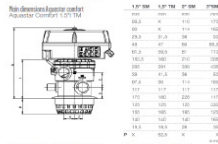
This system is specially designed for swimming pools, as well as public pools and Aquastars. It does not dispose of its own PLC control, but relies on an external fully automatic backwash equipment. This device distinguishes itself by its compact design and diversity, optimally adapted to meet the needs of the environment.

Therefore we differentiate between the types:

- comfort3000 - time controlled
- comfort4000 - pressure & time controlled
- comfort6500 - pressure & time controlled + integrated filter pump control

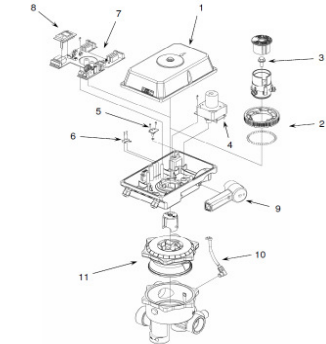
Further, this series shows all the advantages of the Aquastar Easy and many more:

1. Available for filter cover 50, 1.5" or 2" and 3" DM 8, 108
2. A position can be controlled (backwash/flush/wash), also with your own PLC Control
3. Quick on-site installation at the filter
4. Leak-tight interface than 9 pcs. 1.5", 2", 2" electro-pneumatic butterfly ball- or solenoid valves for your filter system.
5. Manual override for all directions
6. Potential connections for EC/EO electric ball valve or additional pump (also possible: second backwash pump)
7. 287 type maintenance equipment



Quick connection from automatic to manual in case of emergency (power failure). Easy mounting and dismounting of AQUASTAR without any additional tool connecting your own with a standard wrench.

**Aquastar comfort 3000, 4000, 6500**  
**Spare Parts**



| Spare Parts<br>Aquastar comfort<br>item | code   | description                            | unit<br>pcs |
|---|--------|--|-------------|
| 1                                       | 142067 | cover kit blue-transparent             | 55,7        |
| 2                                       | 140207 | Gearwheel incl.<br>43 steel balls      | 31,09       |
| 3                                       | 80254  | Hexagon bolt zinced<br>M10x20 DIN 6921 | 2,16        |
| 4                                       | 50894  | Motor                                  | 186,55      |
| 5                                       | 141932 | Pressure switch kit                    | 147,45      |
| 6                                       | 31340  | Pump end switch                        | 19,45       |
| 7                                       | 31357  | Circuit board<br>MVO 12-230 VAC/DC     | 433,8       |
| 8                                       | 31350  | Digital clock 1-port                   | 192,3       |
| 9                                       | 101862 | Emergency handle<br>ABS black          | 5,55        |
| 10                                      | 141931 | Hose kit                               | 19,48       |